

IL-4R α / CD124 (C-6His), Human, Recombinant

货号 : PCK199

产品信息

| | |
|------|---|
| 别名 | Interleukin-4 Receptor subunit alpha; IL-4 Receptor subunit alpha; IL-4R subunit alpha; IL-4R-alpha; IL-4RA; CD124; IL-4-binding Protein; IL4-BP; IL4R; IL4RA |
| 物种 | Human |
| 表达宿主 | Human Cells |
| 序列信息 | Met26-His232 |
| 检索号 | P24394 |
| 分子量 | 24.4 kDa |
| 标签 | C-6His |
| 生物活性 | Measured by its ability to inhibit IL-4-dependent proliferation of TF-1 human erythroleukemic cells. The ED50 for this effect is 5-20 ng/ml. |

产品特性

| | |
|-----|---|
| 纯度 | >95% as determined by reducing SDS-PAGE. |
| 内毒素 | <1.0 EU per μ g as determined by LAL test. |
| 保存 | Lyophilized protein should be stored at -5~-20°C, stable for one year after receipt. Reconstituted protein solution can be stored at 2-8°C for 2-7 days. Aliquots of reconstituted samples are stable at -5~-20°C for 3 months. |
| 运输 | Ambient temperature or ice pack. |
| 制剂 | Lyophilized from a 0.2 μ m filtered solution of PBS, pH7.4. |



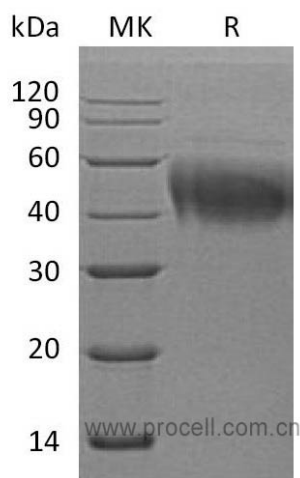
复融

Always centrifuge tubes before opening. Do not mix by vortex or pipetting. It is not recommended to reconstitute to a concentration less than 100 µg/ml. Dissolve the lyophilized protein in distilled water. Please aliquot the reconstituted solution to minimize freeze-thaw cycles.

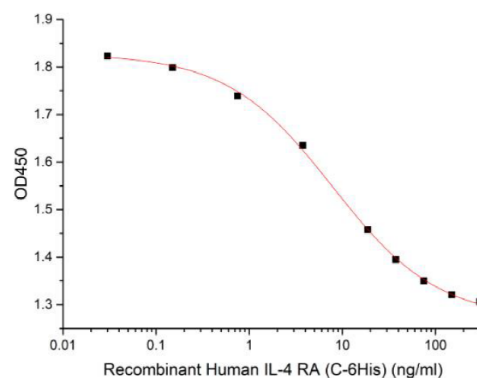
背景介绍

Interleukin 4 Receptor alpha (IL4-Ra) is a widely expressed 140 kDa transmembrane glyco Protein in the class I Cytokine Receptor family. Mature human IL4-Ra consists of a 207 amino acid (aa) extracellular domain (ECD) that contains a Cytokine binding region and one fibronectin type III domain, a 24 aa transmembrane segment, and a 569 aa cytoplasmic domain that contains one Box 1 Motif and one ITIM Motif. IL4-Ra plays an important role in Th2-biased immune responses, alternative macrophage activation, mucosal immunity, allergic inflammation, tumor progression, and atherogenesis. Soluble forms of IL4-Ra, generated by alternate splicing or proteolysis, retain Ligand binding properties and inhibit IL-4 bioactivity. IL4-Ra is a component of two distinct Receptor complexes and shows species selectivity between human and mouse. It can associate with the common gamma chain (γ_c) to form the IL-4 responsive type I Receptor in which γ_c increases the affinity for IL-4 and enables signaling. It can alternatively associate with IL13-Ra1 to form the type II Receptor which is responsive to both IL-4 and IL-13. The use of shared Receptor components contributes to the overlapping biological effects of IL-4 and IL-13 as well as other Cytokines that utilize γ_c .

SDS-PAGE



生物活性



Measured by its ability to inhibit IL-4-dependent proliferation of TF-1 human erythroleukemic cells. The ED50 for this effect is 5-20 ng/ml.

